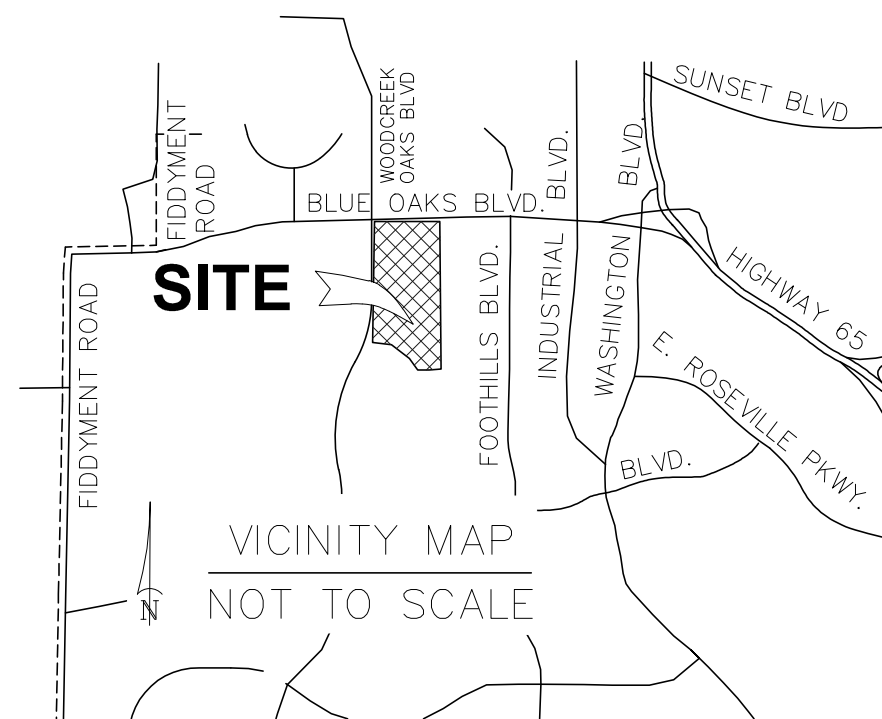
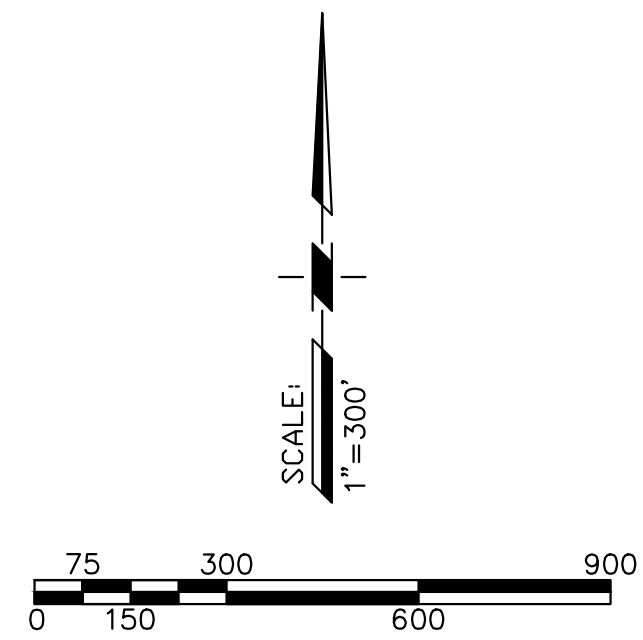
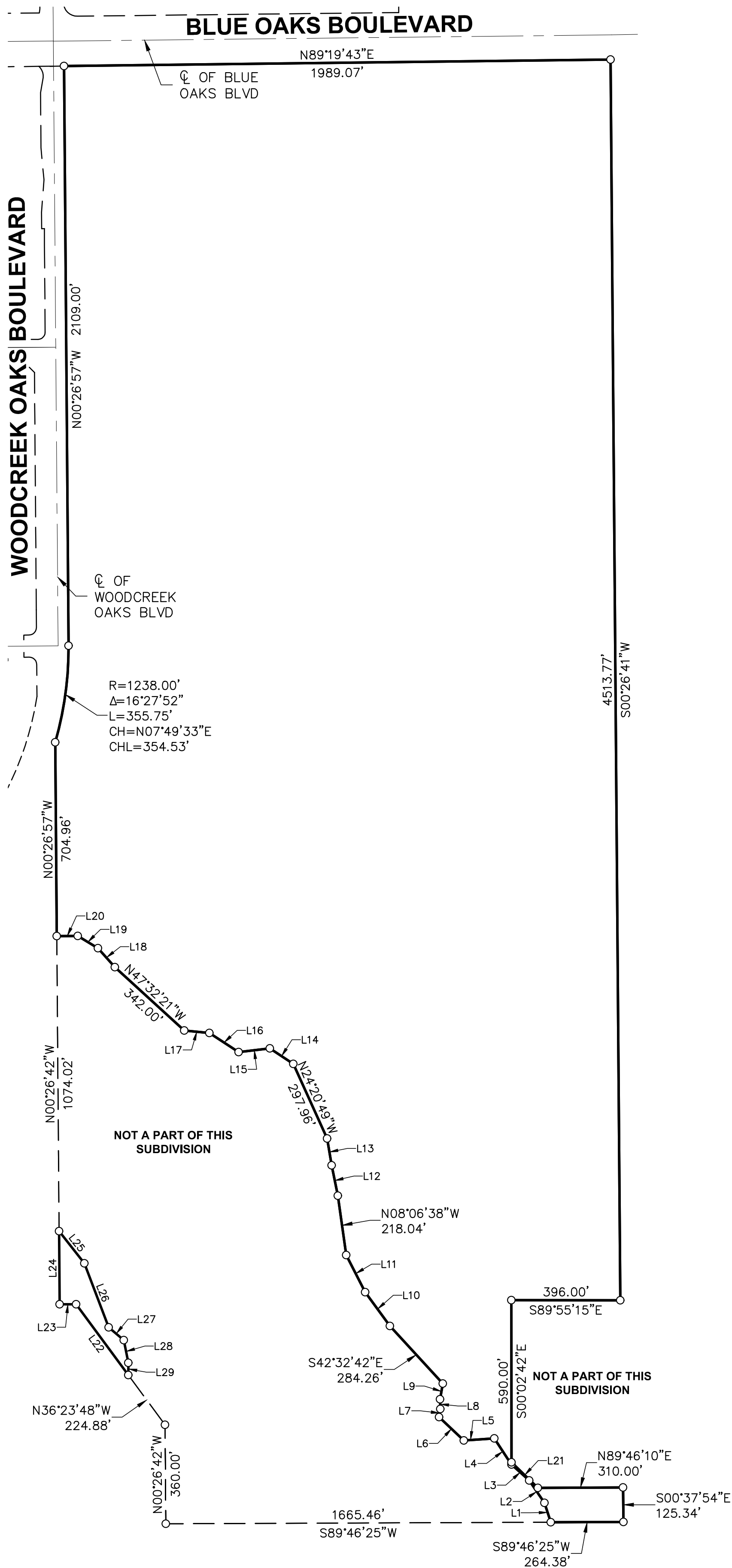


**PROPOSED BOUNDARIES OF
HP CAMPUS OAKS
COMMUNITY FACILITIES
DISTRICT NO. 2
(PUBLIC SERVICES)**

CITY OF ROSEVILLE, PLACER COUNTY, CALIFORNIA
SCALE: 1"=300' DATE: MAY 9, 2016



LEGEND

- BOUNDARY OF ANNEXATION
 - DIMENSION POINT
- TOTAL AREA OF ANNEXATION = 189.911 ACRES

Filed in the office of the City Clerk of the City of Roseville this _____ day of _____, 2016.

City Clerk

I hereby certify that the within map showing proposed boundaries of Community Facilities District No. 2 (Public Facilities) City of Roseville, County of Placer, State of California, was approved by the City Council of the City of Roseville, at a meeting thereof, held on the _____ day of _____, 2016, by its Resolution No. _____

City Clerk

Filed this _____ day of _____, 2016, at the hour of _____ o'clock p.m., in Book _____ of Maps of Assessment and Community Facilities Districts, at Page _____ in the office of the County Recorder in the County of Placer, State of California.

County Recorder,
County of Placer

BOOK _____ COMMUNITY FACILITIES DISTRICTS, PAGE _____